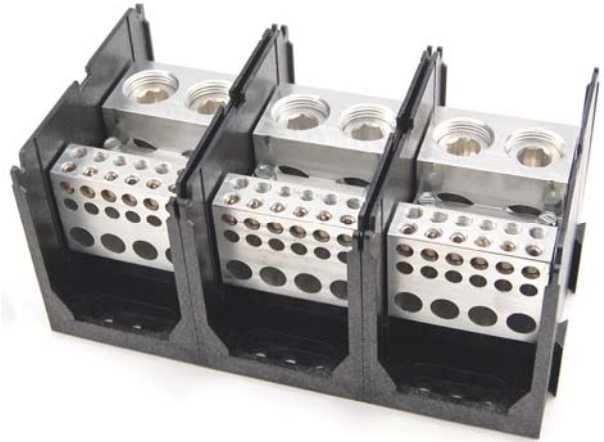


Product Data Sheet



135X707

Power Distribution Block
 UL Listed
 Category QPQS
 950 Amps, 600 Volts (AC/DC)



Provides Feeder Circuit Terminal Spacing up to 600 Volts per UL 508A, Section 10.

Wire Range:

- Line Side: (2) 750kcmil – 1/0 AWG
- Load Side: (4) 3/0 - 6 AWG
- (12) #2 –14 AWG

See tables below for [SCCR wire ranges, flexible stranded and multiple wire approvals.](#)

Electrical Ratings:

- 950A copper wire, 770A aluminum wire (Based on NEC Table 310-16, 75°C columns)
- UL Voltage Rating: 600 Volts AC/DC (UL 1953)
- Factory and Field Wiring

Agency Certifications:

- UL Listed, Investigated to UL 1953, File QPQS.E309401
- RoHS Compliant

Short Circuit Current Ratings:

SCCR Rating applies for Copper Stranded wire only
 UL Class B, C (known as Rigid Stranded, Building Wire, Code Wire)
 UL Class G, H, I (Flexible Stranded, includes DLO)

Suitable Conductors (kcmil/AWG) Copper, Stranded				Overcurrent Protection Class/Max Amp Rating					SCCR, RMS SYM Amps	Volts Max
Line		Load								
Size	Class	Size	Class	J	T	RK1	RK5	G		
750 - 1/0 535-1/0	B,C G, H, I	3/0 -2	B,C	600	700	600	200	60	100,000	600
		2/0 - 2	G, H, I	500	500	400	200	60		
		3/0 - 6	B,C	300	300	200	100	60		
		2/0 - 6	G, H, I							
		Small Opening								
2 - 6	B,C	4 - 6	B,C	300	300	200	100	60		
	G, H, I									

For DC power or any wire combinations or Overcurrent Protection not shown- SCCR is 10,000A

Minimum Enclosure Size: 20" x 24" x 8" (3840 cu. In)

Mechanical Ratings:

- Maximum insulator base temperature: 125°C (257°F) UL RTI
- Flammability rating of insulator base: UL 94 V-0

Materials:

- Connector: High conductivity aluminum, tin plated
- Insulator base: Glass filled polycarbonate (thermoplastic)
- Terminal screws: Aluminum, tin plated and Steel, nickel plated
- Connector mounting screw: Steel, zinc plated

Wire Ranges, Wire Types, Torque Ratings: 135X707

UL Class B, C (known as Rigid Stranded, Building Wire, Code Wire)
 UL Class G, H, I (Flexible Stranded, includes DLO)

Line Side 2) 750 kcmil - 1/0 AWG

Copper Conductor			
Wire Size	Torque		UL Class
kcmil - AWG	N.m	in. lbs	
750 - 1/0	67.8	600	B, C
535 - 1/0	67.8	600	G,H,I
Aluminum Conductor			
Wire Size	Torque		Type
kcmil - AWG	N.m	in. lbs	
750 - 1/0	67.8	600	Stranded

Load Side 8) 3/0 - 6 AWG

Load Side 12) 2-14 AWG

Copper Conductor					Copper Conductor				
Wire Size	Torque		UL Class	No. Per Opening	Wire Size	Torque		UL Class	No. Per Opening
kcmil - AWG	N.m	in. lbs			kcmil - AWG	N.m	in. lbs		
3/0	20.3	180	B, C	1	2	5.7	50	B, C	1
2/0	20.3	180	B, C, G, H, I	1	3	5.7	50	B,C	1
1/0	20.3	180	B, C, G, H, I	1	4	5.7	50	B, C, G, H, I	1
1	20.3	180	B, C, G, H, I	1	6	5.7	50	B, C, G, H, I	1
2	20.3	180	B, C, G, H, I	1	8	5.7	50	B, C, G, H, I	1
3	20.3	180	B, C, G, H, I	1	10	4.5	40	B, C, G, H, I*	1
4	20.3	180	B, C, G, H, I	1	12	4.5	40	B, C, G, H, I*	1
6	20.3	180	B, C, G, H, I	1	14	4.5	40	B, C, G, H, I*	1
					*Also Solid Cu				
Aluminum Conductor					Aluminum Conductor (#8 AWG Minimum)				
Wire Size	Torque		Type	No. Per Opening	Wire Size	Torque		Type	No. Per Opening
kcmil - AWG	N.m	in. lbs			kcmil - AWG	N.m	in. lbs		
3/0 - 6	20.3	180	Stranded	1	2	5.7	50	Stranded	1
					3	5.7	50	Stranded	1
					4	5.7	50	Stranded	1
					6	5.7	50	Stranded	1

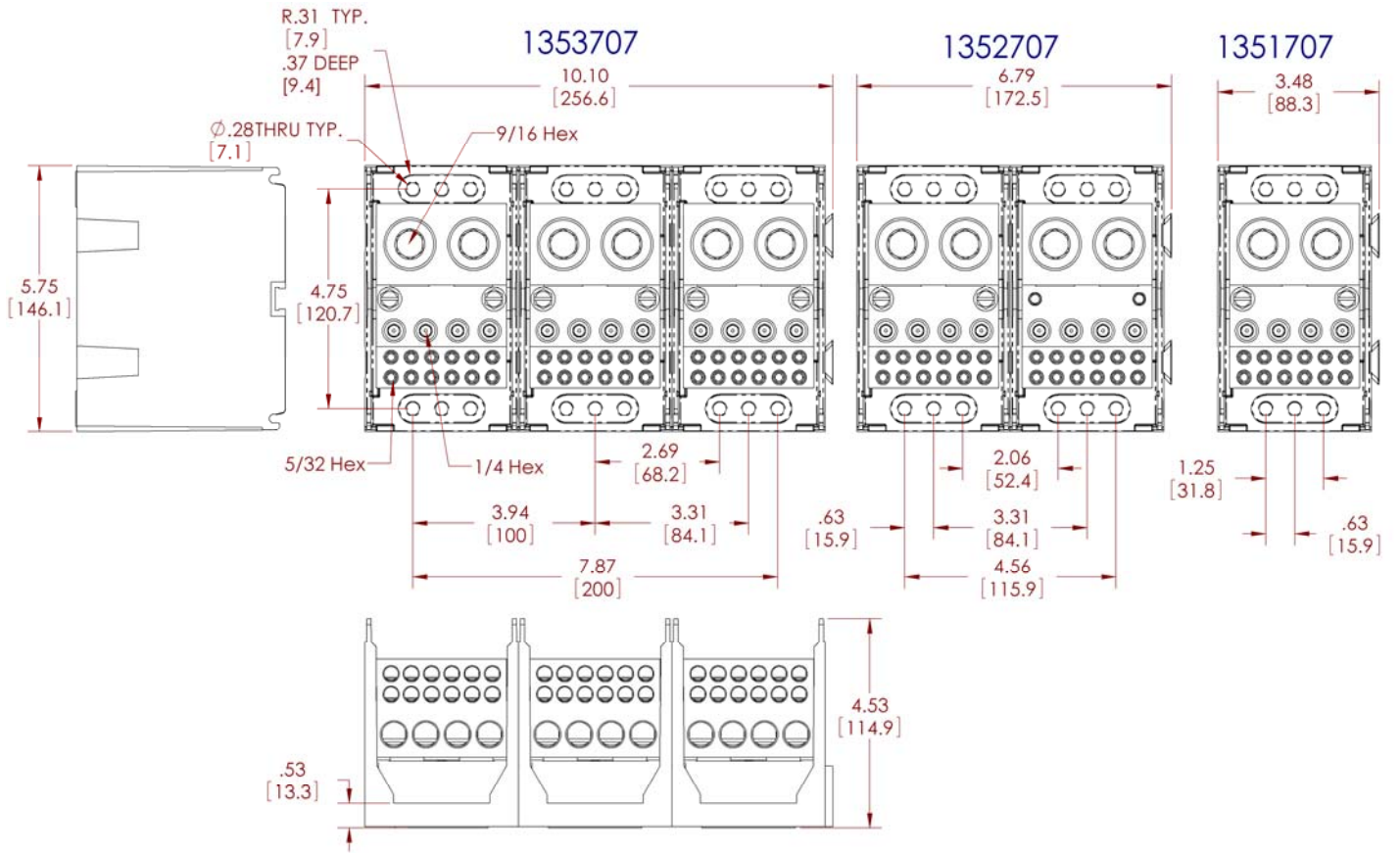
Installation:

- Wire strip length, line and load side tap – 1 3/4"
- Wire strip length, load side tap, top row – 7/8; bottom row – 1 7/8"
- Panel mountable: recommended fastener (4) per pole, 1/4 " or 6mm
 Torque to 30 in. lbs. (3.4 N.m)

Line Side 750 kcmil wire opening- diameter 1.125" (28.5 mm)

Load Side 3/0 AWG wire opening -diameter .547" (13.9 mm)

Load Side #2 AWG wire opening- diameter .312" (7.9 mm)



WWW.MARATHONSP.COM
1-419-352-8441